

46th Annual National Rural Social Work Caucus Conference



Food Insecurity in Rural Areas

CALLIE CAREY, KAMRYN VICKERS, DANIALLE
NICOLLS, & ALLISON SEXTON



HOPE

- “Helping Other People Effectively”
- Location
- Mission Statement

“To provide not only immediate emergency assistance for the poverty level residence of Erath County, but to encourage our clients to break the cycle of poverty by improving their own productivity and lifestyle management skills” (Hope Inc, 2018)
- Services Provided
 - Food Services
 - Clothing
 - Financial Services
 - Medical Services
 - Dental Services
 - Christmas Assistance

Problem Statement, Research Question, & Objectives

- The problem the student researchers studied is the lack of resources in rural communities. The following questions were created by the student researchers:

- Research question:

To what extent do people in rural communities experience food insecurity?

- The objectives the student researchers recognized were:

O₁: To identify solutions for participants without transportation.

O₂: To identify participants who receive supplemental aid to decrease food insecurity.

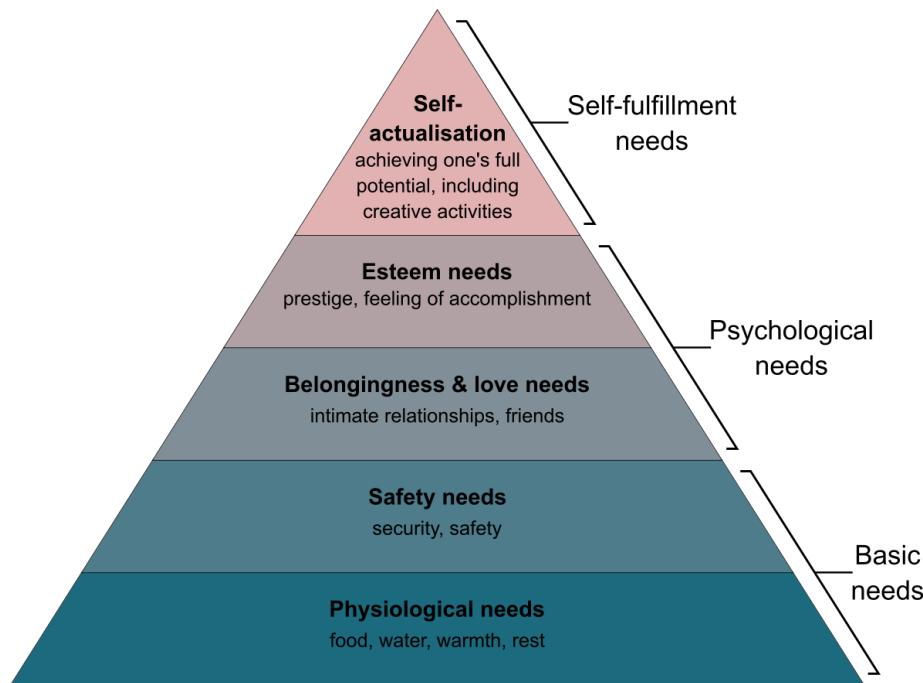
O₃: To identify key factors resulting in food insecurity within participants.

O₄: To identify if participants ages 55 and older experience a decrease in food insecurity.

Literature Review

- Three themes: **Food insecurity, Poverty, Rural Areas**
- Student researchers have identified **16** journal articles that relate to food insecurity and poverty as it relates to rural areas in America.
- **Ten** of the journal articles are quantitative (Allan & Thompson, 1990; Dean & Sharkey, 2011; Glauber & Schafer, 2017; Gunderson et al., 2011; Gunderson et al., 2017; Heflin et al., 2019; Larson et al., 2020; Mattson, 2011; Nord, 2013; Ziliak & Gundersen, 2016;)
- **Four** of the journal articles are qualitative (Burton et al., 2013; Gholami et al., 2017; Keller et al., 2018; Whitley, 2013)
- **Two** of the journal articles are mixed methods (Lascano Galaza et al., 2020; Nolan et al., 2017).

Theoretical Perspectives



- The first theory identified Maslow's Hierarchy of Needs (Maslow, 1943). Maslow's Hierarchy consists of **physiological, safety, love, esteem, and self-actualization** needs (Crandall, et al., 2019).
- The second theory is Karl Marx's Conflict Theory (Griffiths, 2017). Conflict Theory examines the **correlation of competitiveness and social classes, how conflict starts and the effects of conflict in societies** (Collin, 2006).

Methodology: Research Design & Survey Description



Participants voluntarily completed a quantitative survey at the agency created by the student researchers.



12 questions

5 demographic questions

7 quantitative questions



Recruited participants from their community partner agency by approaching clients in a purposive sampling order.

Methodology: Data Collection and Data Input



Completed IRB and received exemption status



Created Variable Names and Variable Response Options from Survey



Created Code Sheet in Excel & Input data in Excel

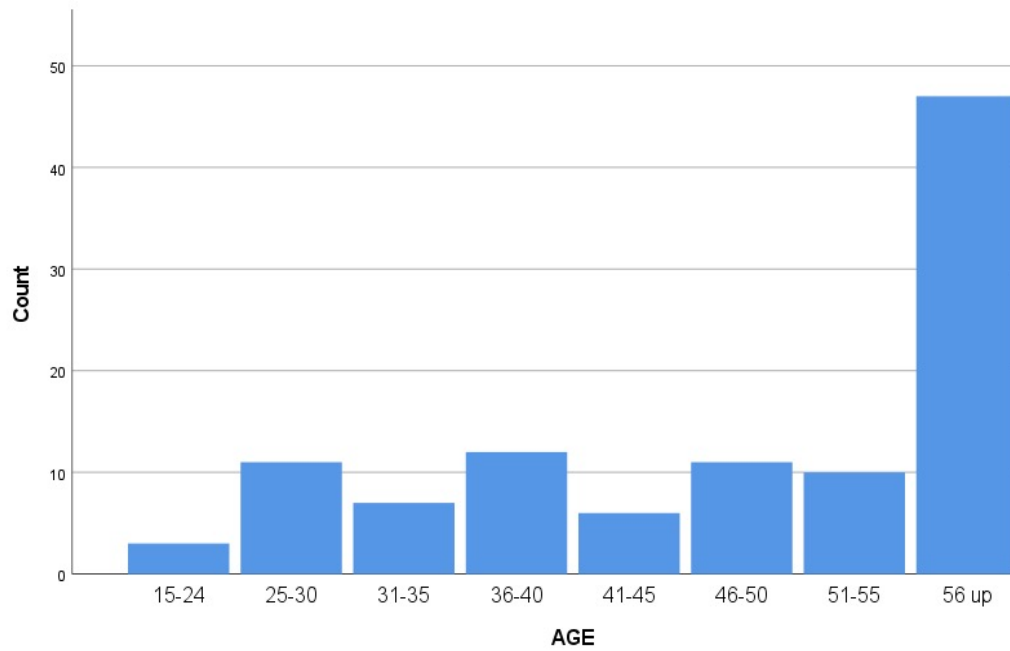


Copied all data into SPSS

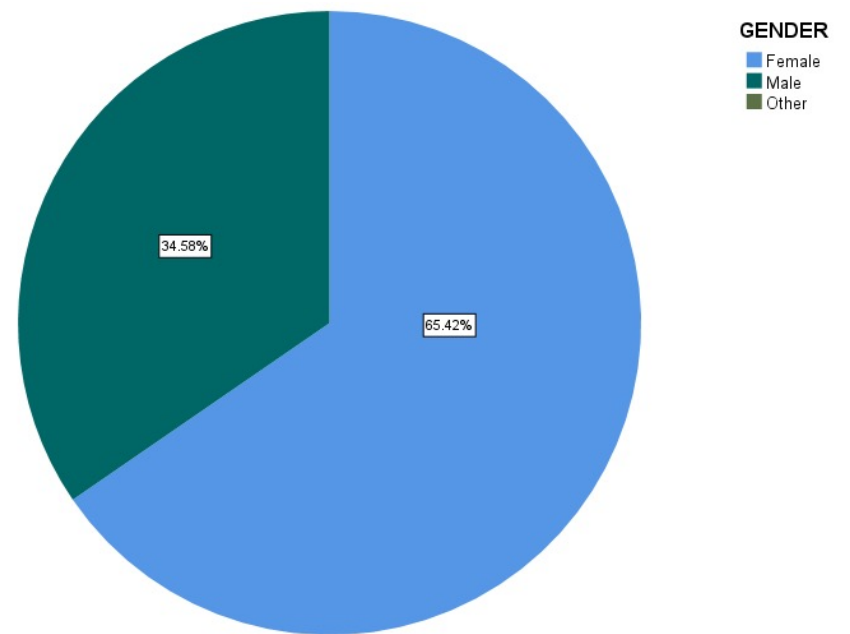
Demographic Data

Sample size of **107** participants

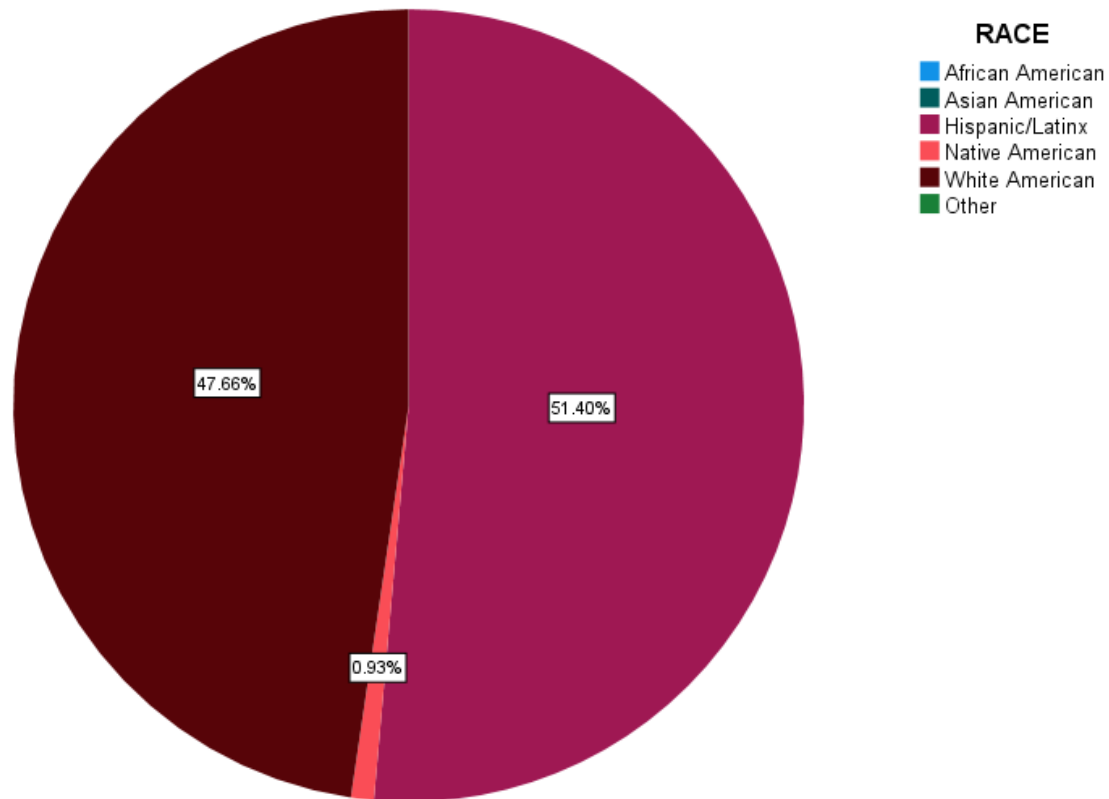
AGE



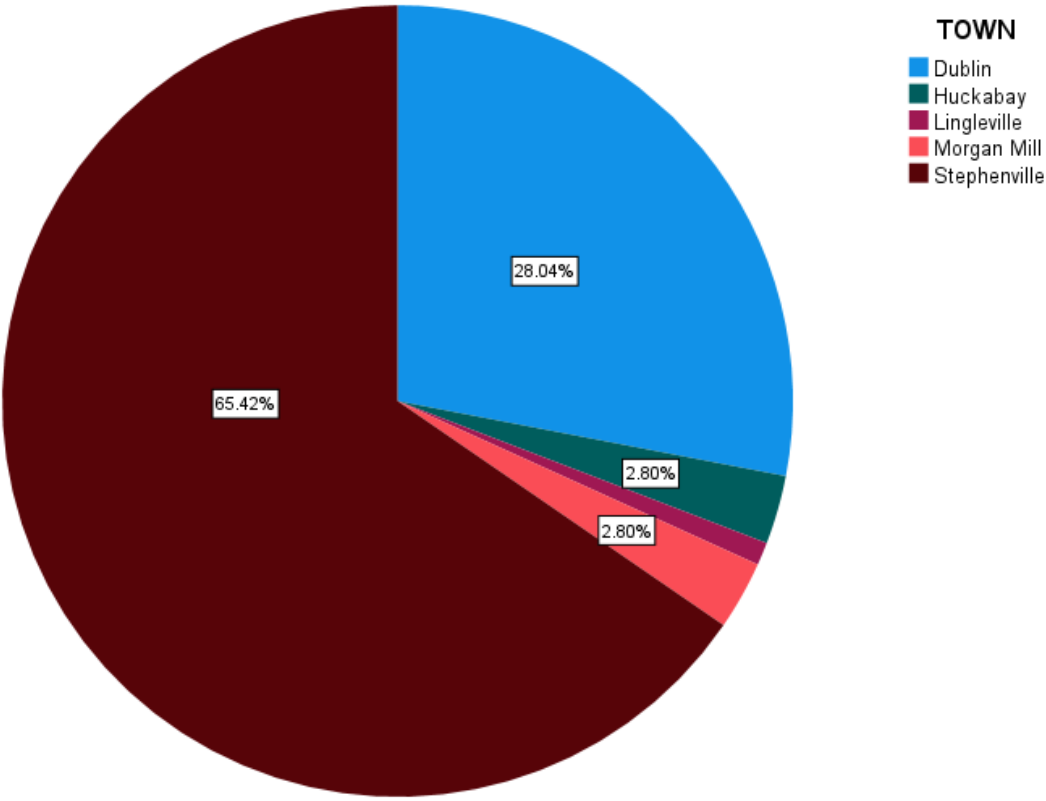
GENDER



Demographic Data



Demographic Data: Towns and Counties



ERATHCO

	N	%
Yes	105	98.1%
No	2	1.9%

Hypotheses

H₁: Participants ages 55 and older will indicate experiencing more food insecurity

Rejected

Tested via
crosstabulations

H₂: Participants ages 18 to 55 will indicate experiencing food insecurity in their lifetime.

Rejected

Tested via
crosstabulations

H₃: Majority of participants will indicate a lack of transportation resulting in food insecurity.

Accepted

Tested via
frequencies

Strengths



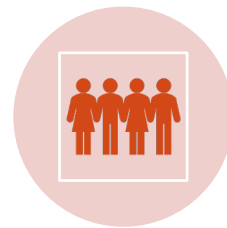
Spanish Translated
Survey



Location of Data
collection



Cooperation between
group members



Supportive Community
Partner

Limitations

Location of survey collection

Limitations in survey questions

Lack of qualitative questions

Timing of data collection/ COVID-19

Ethical Considerations

Obtained informed consent at the time
of data collection

Achieved exemption status from
Institutional Review Board (IRB)

No personal information was collected
(Participants remained anonymous)

Followed NASW Code of Ethics

Implications for Future Social Work Research

Micro

- What age groups in rural areas are in greater need and what services are needed.

Mezzo

- How the rural area can better assess and assist to aid in the reduction of food insecurity.

Macro

- Future research can include implementing ideas and data collected by the student research group and use to further assess challenges within the rural community that result in food insecurity.

References

- Allen, J. E., & Thompson, A. (1990). *Rural poverty among racial and ethnic minorities*. American Journal of Agricultural Economics, 72(5), 1161-1168. <https://doi.org/10.2307/1242526>
- Basic Statistics. (2018), from <https://talkpoverty.org/basics/>
- Burton, L. M., Lichter, D. T., Baker, R. S., & Eason, J. M. (2013). Inequality, family processes, and health in the "new" rural America. *American Behavioral Scientist*, 57(8), 1128–1151. <https://doi-org.zeus.tarleton.edu/10.1177/0002764213487348>
- Collin, R., Dahrendorf, R. (November, 2006). *Conflict and Critical Theories Us*.
- Dean, W., & Sharkey, J. (2011). Food insecurity, social capital and perceived personal disparity in a predominantly rural region of Texas: An individual-level analysis. *Social Science & Medicine*, 72(9), 1454–1462. <https://doi.org/10.1016/j.socscimed.2011.03.015>
- Employment, Poverty, and Public Assistance in the Rural United States*. (2019, October 21).
- Food Research and Action Center. (2020). *Rural Hunger*.
- Gholami, A., Moradpour, F., Khazaei-Pool, M., Moosavi Jahromi, Z., Vafa, M. R., Abbasi Gharemanlo, A., Sohrabi, M., Mahdavi, N., Moradi, Y., & Baradaran, H. R. (2017). Is household food insecurity a determinant of weight status in patients with type 2 diabetes in rural areas? *Medical Journal of the Islamic Republic of Iran*, 31(1), 908-914.
- Glauber, R., Shaefer, A., (2017, September 7). *Employment, poverty, and public assistance in the rural united states*. University of New Hampshire Carsey School of Public Policy.
- Griffiths, H., Keirns, N. J., Strayer, E., Cody-Rydzewski, S., Scaramuzzo, G., Sadler, T. Jones, F. (2017). *Introduction to sociology 2e*. Rice University.
- Gundersen, C., Dewey, A., Hake, M., Engelhard, E., & Crumbaugh, A. S. (2017). Food insecurity across the rural-urban divide: Are counties in need being reached by charitable food assistance? *The annals of the American Academy of Political and Social Science*, 672(1), 217–237. <https://doi-org.zeus.tarleton.edu/10.1177/0002716217710172>
- Gundersen, C., Kreider, B., & Pepper, J. (2011). The economics of food insecurity in the united states. *Applied Economic Perspectives and Policy*, 33(3), 281–303. <https://doi-org.zeus.tarleton.edu/10.1093>
- Heflin, C. M., Altman, C. E., & Rodriguez, L. L. (2019). Food insecurity and disability in the United States. *Disability and Health Journal*, 12(2), 220–226. <https://doi-org.zeus.tarleton.edu/10.1016/j.dhjo.20182.09.006>
- Larson, N., Laska, M., & Neumark-Sztainer, D. (2020, August 25). Food insecurity, diet quality, home food availability, and health risk behaviors among emerging adults: findings from the EAT 2010–2018 study. *American Journal of Public Health*, 110(9), 1422-1428. <http://dx.doi.org.zeus.tarleton.edu:82/10.2105/AJPH.2020.305783>
- Lascano Galarza, M. X. (2020). Resilience to food insecurity: Theory and empirical evidence from international food assistance in Malawi. *Journal of Agricultural Economics*, 71(3), 936-961. <https://doi.org/10.1111/1477-9552.12397>
- Maslow, A. H. (1943). A theory of human motivation. *Psychological Review*, 50(4), 370–396. <https://doi-org.zeus.tarleton.edu/10.1037/h0054346>
- Mattson, J. (2011). Transportation, Distance, and Health Care Utilization for Older Adults in Rural and Small Urban Areas. *Transportation Research Record: Journal of the Transportation Research Board*, 2265(1), 192–199. <https://doi-org.zeus.tarleton.edu/10.3141/2265-22>
- Morris, T. (2017, June 13). *Land areas in the united states classified as rural*. National Center For Biotechnology Information.
- Mott, R., Keller, K., Britt-Rankin, J., & Ball, A. (2018). ‘Out of place around other people’: Experiences of young people who live with food insecurity. *Children & Society*, 32(3), 207-218. <https://doi.org/10.1111/chso.12270>
- National Geographic. (2011, June). *Rural Area*.
- Nolan, L. B., Waldfogel, J., & Wimer, C. (2017). Long-term trends in rural and urban poverty: New insights using a historical supplemental poverty measure. *Annals of the American Academy of Political and Social Science*, 672(1), 123–142. <https://doi-org.zeus.tarleton.edu/10.1177/0002716217713174>
- Nord, M. (2013). To what extent is food insecurity in US households frequent or persistent? *Journal of Hunger and Environmental Nutrition*, 8(2), 109-127. 10.1080/19320248.2013.786665
- Omer, S., & Jabeen, S. (December, 2016). Exploring Karl Marx Conflict Theory in Education: Are Pakistani Private Schools Maintaining Status Quo? *Politics and Policy in Traditional Korea*, 220-236. doi:10.2307/j.ctt1tg5gwm.13
- Rural America At A Glance*, 2019 Edition. (n.d.).
- U.S. Census Bureau QuickFacts: Erath County, Texas. (2019, July 1).
- Whitley, S. (2013). Changing times in rural america: Food assistance and food insecurity in food deserts. *Journal of Family Social Work*, 16(1), 36-52. 10.1080/10522158.2012.736080
- Ziliak, J. (2016, April). Multigenerational families and food insecurity. *Southern Economic Journal*, 82(4), 1147-1166. 10.1002/soej.12082 10.1080/19320248.2013.786665



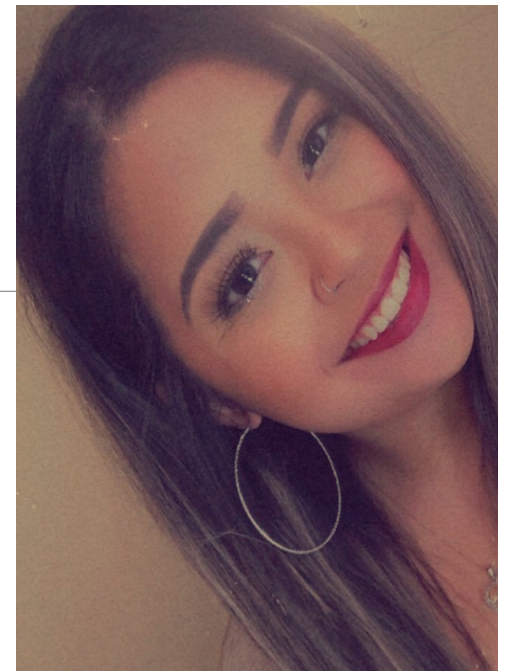
Danialle.Nicolls@go.tarleton.edu



Allison.Sexton@go.tarleton.edu



Callie.Hewett@go.tarleton.edu



Kamryn.Vickers@go.tarleton.edu



@TarletonSOCW