

New River Chamber at Montgomery Locks and Dam, Beaver County, Pennsylvania

CLIENT: **USACE - Pittsburgh District - W911WN24R8000**

Project location In vicinity of 100 Montgomery Dam Rd - Beaver, PA 15061

Respond by ASAP to Thalle Construction Co Inc. with you interest and to request project contract documents:

Contact Thalle Construction Co Inc – Estimating Dept. Attn Vincent Zannini vzannini@thalle.com; quotes@thalle.com D: 919.241.1635

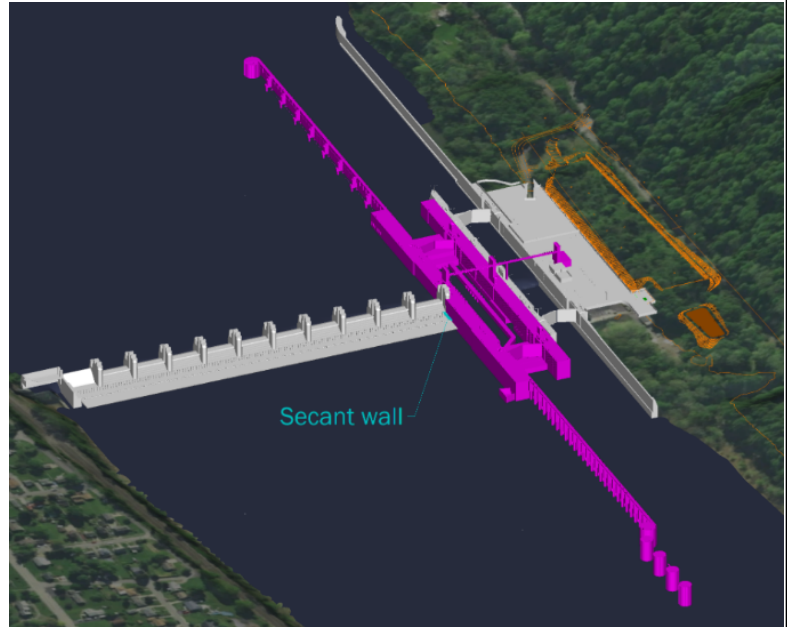
DEADLINES

- Technical Questions Due in advance of March 28, 2024 11:00 am
- Subcontractor Quote / Priced offer Due ASAP in advance of **April 23, 2024** 11:00 am EST To Thalle Construction Co Inc See instructions below in the following pages.

Small Business Utilization

Small Business are encouraged to participate. Offerors shall identify the extent to which Small Businesses (SBs), Veteran-Owned Small Businesses (VOSBs), Service-Disabled Veteran-Owned Small Businesses (SDVOSBs), HUBZone Small Businesses, Small Disadvantaged Businesses (SDBs), and Woman-Owned Small Businesses (WOSBs) will be utilized in the performance of this contract.

. New River Chamber



New River Chamber Construction Overall Scope of Work Features

Temporary Facilities	New Buildings & Shelters
Demolition	Masonry
Dredging	Roofing
Cofferdam & pilling	Openings Doors Windows
Barge & Tug service.	Painting & coatings
Diving	HVAC
Navigations improvement	Metal Fabrications
Foundation shaft & Piles	Structural Steel
Instrumentation-Monitoring	Equipment Machinery
New Chamber Concrete-Monoliths	Mechanical piping
Lock Walls	Compressed Air systems
Aggregates	Electrical
Concrete Materials	CCTV & Security
Pre-engineered Metal buildings	Process Controls
	Utility Bridge
	Signs

New River Chamber at Montgomery Locks and Dam

Project Description

The Contract is to construct a New River Chamber at the Montgomery Locks and Dam on the Ohio River in Monaca, PA. This project will construct a new nominal 600-foot length by 110-foot width lock chamber. Project scope and bid schedules include specific features include and not limited to base bid and all options:

BASE BID Contract consists of completion of a new Lock Chamber.: a. Pre-excavate as needed for construction. b. Install temporary service bridge. c. Disconnect dam side power while maintaining lock power. d. Install flashboards. e. Construction the in water combination wall. f. Demolition Upper and Lower Guard walls. g. Construct foundation drilled shafts, and in the wet monoliths. Construction of monoliths includes all concrete, reinforcing steel, waterstops, and associated embedded metal items. h. Construct cofferdam. i. Dewater the coffer area. j. Construct Land Wall Equipment Buildings. k. Construct in the dry monoliths. Construction of monoliths includes all concrete, reinforcing steel, waterstops, and associated embedded metal items. l. Install Construction Instrumentation. m. Demolition of original River Wall and Fixed Crest Weir. n. Excavate alluvium and rock for emptying and filling culverts. o. Construct River Wall facing. p. Install handrails, and top of wall features. q. Install permanent instrumentation. r. Demolition of temporary downstream bridge.

OPTION ONE consists of construction of the guard walls and associated items: a. Initial construction Upper and Lower Guard Walls, including structural and electrical features. b. Install upstream dikes. c. Install downstream dikes. d. Install waterway signs upstream and downstream of the lock.

OPTION TWO consists of construction of the sills and culverts: a. Construct upper miter sill and bulkhead sill. b. Construct lower miter/bulkhead sill. c. Construct filling and emptying culverts. d. Construct chamber floor.

OPTION THREE consists of Fabrication and installation of the hydraulic Steel Structure components: a. filling and emptying valves, culvert bulkheads. b. Fabricate and deliver miter gates c. miter gates d. Test fit of existing Stoplogs.

OPTION FOUR consists of construction buildings, bridge, electrical and mechanical features: a. Construct Middle Wall and River Wall Equipment Buildings. b. Construct Middle Wall Control Shelters. c. drilled shafts, towers and permanent utility bridge land chamber span. d. Install electrical, mechanical and plumbing systems for lock and verify operation. e. jib crane. f. tow haulage system.

OPTION FIVE consists of completion of removal of the cofferdam. Specific features include and not limited to: a. Flood the coffer area. b. Remove cofferdam. c. Construction of Middle Wall bull nose cell. d. Construct downstream transition wall. e. Finish construction of Upper and Lower Guard Walls, including structural and electrical features. f. Install miter gates. g. Install permanent utility bridge river span.

OPTION SIX consists of milling and overlay paving of Montgomery dam road

Subcontractor / supplier offer instructions.

Offers Email offers to quotes@thalle.com ; include Project title in subject line to Thelle Construction Co inc 900 NC 86, Hillsborough NC 27278 Corp Phone 919.245.1490 fax 919-241-1659

Review Contract Documents to develop your offer

- Offers are encouraged to be on company letterhead,
- include your Business Address, Point of contact(s): Phone number and Email address.
- Related Unit pricing: Consider client bid Item schedule, (base bid and Options) or sub-elements.
- If applicable Government Economic Price adjustment for Select Commodities table.
- If applicable include specialty License Number
- Bonding rate or percentage for work performed.
- Supplemental to your offer Include:
 - **Letter of commitment** is strongly encouraged from all small businesses and subcontractors performing

- Note your scope inclusions or exclusions and acknowledge any relevant contract documents, specifications, drawings amendments etc.
 - Utilization of Small Business Concerns (SB, SDB, WOSB, VOSB, SDVOSB, HUBzone)
- major element identified by the RFP. [Draft template(s) available]
- Offer performing Major Elements Identified by the RFP may include relevant technical information, past performance, qualifications, and or References may also be considered or requested as needed.

CONTRACT COMPLIANCE All contracts and purchase orders will comply with and flow-down project documents requirements, contract clauses (FAR and DFAR Clauses) , not limited to: contractor qualification(s); State & Federal laws and regulations Insurance Coverage, Buy American, Employment Practices, Davis Bacon wage and PLA labor obligation, taxes, Civil Rights Acts, Equal Employment, Cybersecurity

Business Utilization of: Small (SB), Small Disadvantage (SDB), Woman owned (WOSB), Veteran-owned (VOSB), Service-Disabled Veteran Owned (SDVOSB) HUBzone business firms are encouraged to participate. Work & materials may be combined or divided to facilitate maximum participation. Subcontractors are obliged to sublet to 2nd & 3rd tier subcontractors. Firms needing assistance with SBA Business classifications, obtaining bonding, loan capital, lines of credit, insurance, obtaining equipment & supplies materials or negotiate joint venture & partnership arrangements, or to inquiry Insurance requirements, payment terms, , may contact Thalle Construction Co Inc for assistance. Offers will negotiate fairly with interested firms & will not reject firms as unqualified without sound reasons-based on capabilities.

**Subcontractor, Services and Materials Sought
for work as described in contract Documents, Technical Specifications and Drawings**

CONTRACT DRAWINGS VOLUME AND FEATURES INDEX

<u>FEATURE CODES</u>	<u>DESCRIPTION</u>
VOLUME 1	
0	GENERAL
4	SITE - GENERAL
4.1	SITE - CONSTRUCTION SEQUENCE
4.2	SITE - CONCEPT DRAWINGS
4.3	SITE - LOCK DEMOLITION
5	CONCRETE BATCH PLANT SITE DEVELOPMENT
6	ESPLANADE SITE DEVELOPMENT
VOLUME 2	
10	CORE BORINGS
19	COFFERDAM - GENERAL
19.1	COFFERDAM - LAYOUT
19.2	COFFERDAM - PIPE PILES
19.3	COFFERDAM - DEWATERING
19.4	COFFERDAM - FLOODWAY
19.5	COFFERDAM - TEMPORARY CLOSURE
19.6	COFFERDAM - DEMOLITION
VOLUME 3	
20	LOCK - GENERAL
20.1	LOCK - EXISTING LAND WALL
20.2	LOCK - EXISTING MIDDLE WALL

20.3	LOCK - EXISTING RIVER WALL
20.4	LOCK - MIDDLE WALL
20.5	LOCK - RIVER WALL (INTAKE MONOLITHS)
20.6	LOCK - RIVER WALL (CHAMBER MONOLITHS)
20.7	LOCK - RIVER WALL (DISCHARGE MONOLITHS)
20.8	LOCK - EMPTYING BASIN
20.9	LOCK - UPPER GUARD WALL
20.1	NOT USED
20.11	LOCK - LOWER GUARD WALL
20.12	LOCK - CULVERTS AND LOCK FLOOR
20.13	LOCK - UPPER AND LOWER SILLS
20.14	LOCK - DRILLED SHAFTS
20.15	LOCK - MISCELLANEOUS METALS
20.16	LOCK - LOCK STOPLOG RECESS LINERS
20.17	LOCK - LOCK STOPLOG RECESS FILLERS
20.18	LOCK - INTAKE SCREENS
20.19	LOCK - FLOATING MOORING BITTS AND GUIDE FRAMES
VOLUME	
4	
21	HSS - GENERAL
21.1	HSS - MITER GATES AND ANCHORAGE
21.2	HSS - CULVERT VALVES
21.3	HSS - CULVERT BULKHEADS
22	GATE OPERATING MACHINERY
27	PIPING - GENERAL
27.1	PIPING - COMPRESSED AIR SYSTEM
27.2	PIPING - SERVICE WATER SYSTEM
28	VALVE OPERATING MACHINERY
VOLUME	
5	
29	ELECTRICAL - GENERAL
29.1	ELECTRICAL - TEMPORARY AND DEMOLITION
29.2	ELECTRICAL - POWER
29.3	ELECTRICAL - CONTROLS
29.4	ELECTRICAL - LIGHTING
29.5	ELECTRICAL - CCTV
29.6	ELECTRICAL - SECURITY
29.7	ELECTRICAL - SCHEDULES
29.8	ELECTRICAL - GROUNDING
VOLUME	
6	
33	TOW HAULAGE SYSTEM
40	DAM - GENERAL
40.1	DAM - MODIFICATIONS
40.2	DAM - COMBINATION WALL
53	UTILITY BRIDGE
53.1	UTILITY BRIDGE - TEMPORARY
68	ROAD IMPROVEMENTS
79	BUILDINGS - GENERAL
79.1	BUILDINGS - EXISTING LAND WALL SERVICE BUILDING
79.2	BUILDINGS - LAND WALL EQUIPMENT BUILDING

79.3	BUILDINGS - MIDDLE WALL EQUIPMENT BUILDING
79.4	BUILDINGS - UPSTREAM CONTROL SHELTER
79.5	BUILDINGS - DOWNSTREAM CONTROL SHELTER
79.6	BUILDINGS - RIVER WALL EQUIPMENT BUILDING
79.7	BUILDINGS - RESIDENT ENGINEER OFFICE
82	NAVIGATION IMPROVEMENTS
83	DREDGING
88	INSTRUMENTATION
95	WATERWAY SIGNS
99	DISPOSAL AREA - GENERAL

Reference Drawings

Reference Volume 1
Reference Volume 2
Reference Volume 3

TECHNICAL SPECIFICATIONS INDEX

DIVISION 01 - GENERAL REQUIREMENTS

01 11 13.00 08	SUMMARY OF WORK
01 22 00.00 08	PRICE AND PAYMENT PROCEDURES
01 30 00.00 08	ADMINISTRATIVE REQUIREMENTS
01 31 00.00 08	DATA MANAGEMENT
01 32 01.00 08	PROJECT SCHEDULE NETWORK ANALYSIS
01 32 23.00 08	SURVEY AND ALIGNMENT CONTROL
01 32 25.00 08	LiDAR AND IMAGERY
01 32 33.00 08	DIGITAL PROGRESS IMAGES
01 33 00	SUBMITTAL PROCEDURES
01 33 16.00 10	DESIGN DATA (DESIGN AFTER AWARD)
01 35 00.00 08	SPECIAL PROCEDURES
01 35 26.00 08	GOVERNMENTAL SAFETY REQUIREMENTS
01 35 26.13 08	DIVING SERVICES
01 42 00	SOURCES FOR REFERENCE PUBLICATIONS
01 45 00.00 08	QUALITY CONTROL
01 45 00.15 08	RESIDENT MANAGEMENT SYSTEM CONTRACTOR MODE (RMS CM)
01 45 35	SPECIAL INSPECTIONS
01 50 00	TEMPORARY CONSTRUCTION FACILITIES AND CONTROLS
01 50 10.00 08	PROJECT AND SAFETY SIGNS
01 53 13	TEMPORARY UTILITY BRIDGE
01 54 00.00 08	GOVERNMENT EQUIPMENT AVAILABLE FOR USE IN PERFORMANCE OF CONTRACT
01 57 19.00 08	TEMPORARY ENVIRONMENTAL CONTROLS
01 73 19.00 08	GOVERNMENT-FURNISHED PROPERTY
01 74 19.00 08	DISPOSAL AND OPEN WATER PLACEMENT OF MATERIALS
01 78 00	CLOSEOUT SUBMITTALS
01 78 23	OPERATION AND MAINTENANCE DATA
01 78 24.00 10	FACILITY DATA REQUIREMENTS
01 78 43.00 08	SPARE PARTS
01 91 00.15 10	GENERAL COMMISSIONING

DIVISION 02 - EXISTING CONDITIONS

02 32 00	FOUNDATION VERIFICATION DRILLING SAMPLING AND RECORDING
----------	---

02 41 00.00 08 DEMOLITION
02 81 00 TRANSPORTATION AND DISPOSAL OF HAZARDOUS MATERIALS
02 82 00 ASBESTOS REMEDIATION
02 83 00 LEAD REMEDIATION
02 84 16 HANDLING OF LIGHTING BALLASTS AND LAMPS CONTAINING PCBs AND
MERCURY
02 84 33 REMOVAL AND DISPOSAL OF POLYCHLORINATED BIPHENYLS (PCBs)

DIVISION 03 - CONCRETE

03 00 00 GENERAL CONCRETE REQUIREMENTS
03 11 14.01 CONCRETE: FORMWORK (IN-THE-WET)
03 11 14.02 CONCRETE: FORMWORK (IN-THE-DRY)
03 15 14 WATERSTOPS IN CONCRETE FOR CIVIL WORKS
03 20 02 CONCRETE REINFORCEMENT FOR CIVIL WORKS
03 23 00 STRESSED TENDON REINFORCING
03 30 00 CAST-IN-PLACE CONCRETE
03 30 00.20 08 CONCRETE: FIELD DEMONSTRATIONS
03 37 06.00 08 JET GROUTING
03 37 26.10 08 CONCRETE: UNDERWATER AND FLOWABLE
03 37 26.20 08 TEMPORARY UNDERWATER CONCRETE
03 41 33.02 PRECAST STRUCTURAL PRETENSIONED CONCRETE (VERTICAL
CONSTRUCTION)
03 45 33 PRECAST PRESTRESSED STRUCTURAL CONCRETE
03 62 16 METALLIC NON-SHRINK GROUTING
03 70 00 MASS CONCRETE
03 70 05.00 08 ALTERNATE COLD WEATHER PROTECTION

DIVISION 04 - MASONRY

04 20 00 UNIT MASONRY

DIVISION 05 - METALS

05 05 20.00 27 POST-INSTALLED CONCRETE AND MASONRY ANCHORS FOR LOCK
COMPONENTS
05 05 20.01 27 POST-INSTALLED CONCRETE AND MASONRY ANCHORS (VERTICAL
CONSTRUCTION)
05 12 00 GENERAL STRUCTURAL STEEL - VERTICAL CONSTRUCTION
05 12 00.02 BRIDGE STRUCTURAL STEEL - VERTICAL CONSTRUCTION
05 12 10 ELASTOMERIC BEARING PADS
05 30 00 STEEL DECKS
05 40 00 COLD-FORMED METAL FRAMING
05 50 13 MISCELLANEOUS METAL FABRICATIONS
05 50 15 CIVIL WORKS FABRICATIONS
05 51 00 METAL STAIRS
05 51 33 METAL LADDERS
05 52 00 METAL RAILINGS
05 59 20 FABRICATION OF HYDRAULIC STEEL STRUCTURES

DIVISION 06 - WOOD PLASTICS AND COMPOSITES

06 10 00 ROUGH CARPENTRY
06 70 00 FIBERGLASS REINFORCED PLASTIC (FRP) PANEL
06 73 01 FIBERGLASS REINFORCED PLASTIC (FRP) GRATING AND TREADS
06 82 14 FIBERGLASS REINFORCED PLASTIC (FRP) STRUCTURAL SHAPES AND PIPE
AND TUBE RAILINGS

DIVISION 07 - THERMAL AND MOISTURE PROTECTION

07 22 00 RIGID INSULATION
07 27 10.00 10 BUILDING AIR BARRIER SYSTEM
07 27 19.01 SELF-ADHERING AIR BARRIERS
07 27 26 FLUID-APPLIED MEMBRANE AIR BARRIERS
07 27 36 SPRAY FOAM AIR BARRIERS
07 42 63 FABRICATED WALL PANEL ASSEMBLIES

07 60 00 FLASHING AND SHEET METAL
07 61 14.00 20 STEEL STANDING SEAM ROOFING
07 84 00 FIRESTOPPING
07 92 00 JOINT SEALANTS

DIVISION 08 - OPENINGS

08 11 13 STEEL DOORS AND FRAMES
08 36 13 SECTIONAL OVERHEAD DOORS
08 41 13 ALUMINUM-FRAMED ENTRANCES AND STOREFRONTS
08 45 23 INSULATED TRANSLUCENT FIBERGLASS SANDWICH PANEL WALL SYSTEM
08 71 00 DOOR HARDWARE
08 81 00 GLAZING
08 91 00 METAL WALL LOUVERS

DIVISION 09 - FINISHES

09 22 00 SUPPORTS FOR GYPSUM BOARD
09 29 00 GYPSUM BOARD
09 65 00 RESILIENT WALL BASE
09 90 00 PAINTS AND COATINGS
09 97 02 PAINTING: HYDRAULIC STEEL STRUCTURES AND APPURTENANCES

DIVISION 10 - SPECIALTIES

10 14 00.10 EXTERIOR SIGNAGE
10 14 00.20 INTERIOR SIGNAGE
10 28 13 TOILET ACCESSORIES
10 44 16 FIRE EXTINGUISHERS

DIVISION 13 - SPECIAL CONSTRUCTION

13 50 00 INSTRUMENTATION PROGRAM
13 50 10 MOVEMENT PINS
13 50 15 AUTOMATED SURVEY EQUIPMENT
13 50 20 ELECTRONIC INCLINOMETERS
13 50 25 MANUAL INCLINOMETERS
13 50 30 ELECTRONIC PIEZOMETERS
13 50 35 MANUAL PIEZOMETERS
13 50 45 MANUAL CRACKMETERS
13 50 50 AUTOMATED CRACKMETERS
13 53 20 LOAD CELLS MOUNTED ON ROCK ANCHORS
13 70 00 AUTOMATED DATA ACQUISITION SYSTEM (ADAS)

DIVISION 14 - CONVEYING EQUIPMENT

14 46 00 VERTICAL RECIPROCATING CONVEYOR

DIVISION 22 - PLUMBING

22 00 00 PLUMBING GENERAL PURPOSE
22 11 13.00 08 PLUMBING SERVICE WATER SYSTEM
22 15 14.00 40 GENERAL SERVICE COMPRESSED-AIR SYSTEMS LOW PRESSURE
22 15 19.19 08 AIR COMPRESSOR

DIVISION 23 - HEATING VENTILATING AND AIR CONDITIONING (HVAC)

23 03 00.00 20 BASIC MECHANICAL MATERIALS AND METHODS
23 05 93.00 06 TESTING ADJUSTING AND BALANCING (TAB) OF HVAC
23 07 00 THERMAL INSULATION FOR MECHANICAL SYSTEMS
23 09 13 INSTRUMENTATION AND CONTROL DEVICES FOR HVAC
23 23 00 REFRIGERANT PIPING
23 35 19.00 20 INDUSTRIAL VENTILATION AND EXHAUST
23 81 00 DECENTRALIZED UNITARY HVAC EQUIPMENT
23 82 46.00 40 ELECTRIC UNIT HEATERS
23 82 46.00 41 ELECTRIC UNIT HEATERS - RECIRCULATION AIR ONLY

DIVISION 25 - INTEGRATED AUTOMATION

25 05 11.01 28 CYBERSECURITY

25 05 11.02 28 CYBERSECURITY FOR CIVIL WORKS OPERATIONAL TECHNOLOGY
25 05 11.03 28 CYBERSECURITY FOR FACILITY-RELATED CONTROL SYSTEMS

DIVISION 26 - ELECTRICAL

26 05 19.10 08 INSULATED WIRE AND CABLE
26 08 00 APPARATUS INSPECTION AND TESTING
26 20 00 DISTRIBUTION SYSTEM
26 28 00.00 10 MOTOR CONTROL CENTERS SWITCHBOARDS AND PANELBOARDS
26 28 01.00 10 COORDINATED POWER SYSTEM PROTECTION
26 29 23 ADJUSTABLE SPEED DRIVE (ASD) SYSTEMS UNDER 600 VOLTS
26 32 14.00 10 ELECTRIC GENERATOR SET
26 36 23 AUTOMATIC TRANSFER SWITCHES AND BY-PASS/ISOLATION SWITCH
26 41 00 LIGHTNING PROTECTION SYSTEM
26 51 00 INTERIOR LIGHTING
26 56 00.00 08 EXTERIOR LIGHTING
26 56 13.00 POLES AND STANDARDS

DIVISION 27 - COMMUNICATIONS

27 10 00 BUILDING TELECOMMUNICATIONS CABLING SYSTEM
27 13 23.00 08 COMMUNICATIONS OPTICAL BACKBONE CABLING
27 21 10.00 08 FIBER OPTIC DATA TRANSMISSION SYSTEM
27 51 16 PUBLIC ADDRESS SYSTEMS

DIVISION 28 - ELECTRONIC SAFETY AND SECURITY

28 08 10 ELECTRONIC SECURITY SYSTEM ACCEPTANCE TESTING
28 10 05 ELECTRONIC SECURITY SYSTEMS (ESS)
28 10 05.00 08 CLOSED CIRCUIT TELEVISION (CCTV)
28 31 70 INTERIOR FIRE ALARM SYSTEM ADDRESSABLE

DIVISION 31 - EARTHWORK

31 00 00 EARTHWORK
31 00 00.71 08 ROADWAY EARTHWORK
31 05 19.13 GEOTEXTILES FOR EARTHWORK
31 11 00 CLEARING AND GRUBBING
31 23 05 MASS EXCAVATION
31 23 06 BLASTING
31 33 01.00 08 ROCK LINING
31 41 16 METAL SHEET PILING
31 42 00 COFFERDAM
31 45 00 DIVERSION AND CARE OF WATER
31 60 00 FOUNDATION PREPARATION
31 62 16.13 DRILLED IN PLACE STEEL PIPE PILES
31 62 23.13 CAST-IN-PLACE CONCRETE PILES
31 63 29 DRILLED CONCRETE PIERS AND SHAFTS
31 68 13 SOIL AND ROCK ANCHORS

DIVISION 32 - EXTERIOR IMPROVEMENTS

32 01 16.71 08 COLD MILLING ASPHALT PAVING
32 01 16.76 08 COLD-MIX REUSED ASPHALT PAVING
32 01 17.00 08 ASPHALT PAVEMENT PATCHING
32 01 19.61 FIELD MOLDED JOINT SEALANTS FOR CIVIL WORKS
32 11 23 AGGREGATE BASE COURSES
32 11 25 LOCK FLOOR DRAINAGE LAYER
32 12 13.15 08 ASPHALT TACK AND PRIME COATS
32 12 16.00 08 ASPHALT PAVEMENT CONSTRUCTION
32 13 73.19 COMPRESSION JOINT SEALS FOR CIVIL WORKS
32 17 23 PAVEMENT MARKINGS
32 31 13 CHAIN LINK FENCES AND GATES
32 34 13 FABRICATED PEDESTRIAN BRIDGES
32 92 19 SEEDING

DIVISION 33 - UTILITIES

- 33 11 00 WATER UTILITY DISTRIBUTION PIPING
- 33 30 00 SANITARY SEWERAGE
- 33 31 23.00 10 SANITARY SEWER FORCE MAIN PIPING
- 33 32 16 PACKAGED UTILITY WASTEWATER PUMPING STATIONS
- 33 40 00 STORMWATER UTILITIES
- 33 71 02 UNDERGROUND ELECTRICAL DISTRIBUTION
- 33 82 00 TELECOMMUNICATIONS OUTSIDE PLANT (OSP)

DIVISION 35 - WATERWAY AND MARINE CONSTRUCTION

- 35 01 41.00 10 ELECTROMECHANICAL OPERATING MACHINERY FOR LOCKS AND DAMS
- 35 05 40.14 10 HYDRAULIC POWER SYSTEMS FOR CIVIL WORKS STRUCTURES
- 35 08 40 MITER GATE COMMISSIONING
- 35 11 50 TOW HAULAGE SYSTEM
- 35 20 16.33 MITER GATES
- 35 20 16.45 MITER GATE ANCHORAGE
- 35 20 16.46 CULVERT VALVES
- 35 20 23.10 UNDERWATER EXCAVATION
- 35 31 19 RIVERINE STRUCTURES
- 35 49 23.23 25 GUARD WALLS
- 35 59 29 FLOATING MOORING BITTS

DIVISION 40 - PROCESS INTERCONNECTIONS

- 40 05 13.96 WELDING PROCESS PIPING
- 40 60 00 PROCESS CONTROL
- 40 60 00.10 TOW HAULAGE PROCESS CONTROL

DIVISION 41 - MATERIAL PROCESSING AND HANDLING EQUIPMENT

- 41 22 13.16 JIB CRANES

Geotechnical Reports

Amendments

Drawings

Project Manual - Solicitation, Offer Contract requirements

Technical Specifications

Other forthcoming Documents as issued