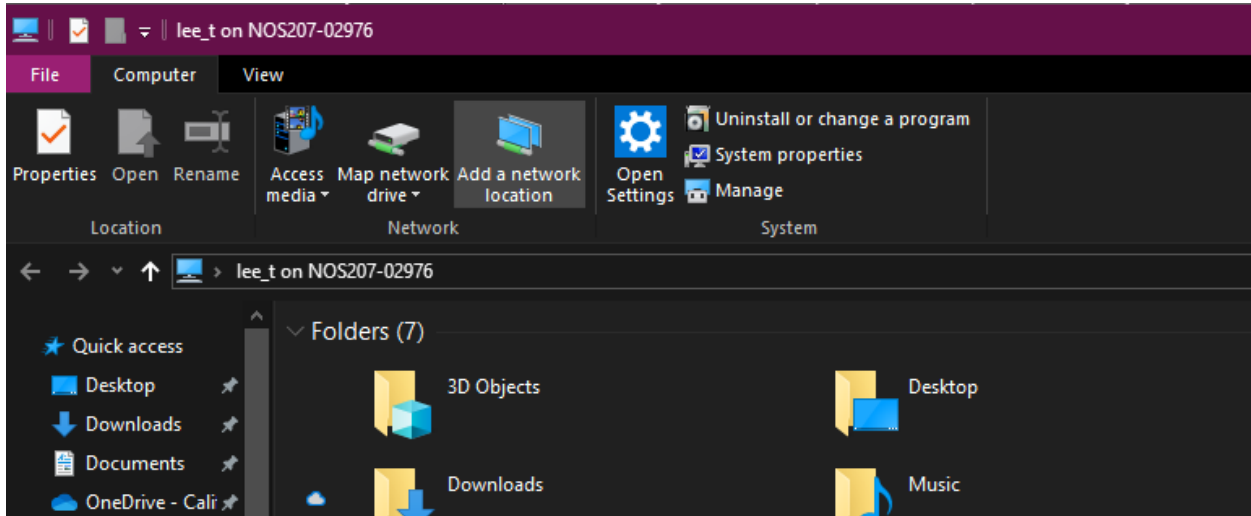


Mapping a shared drive on a personal computer

Search “This PC” in the bottom left hand corner.

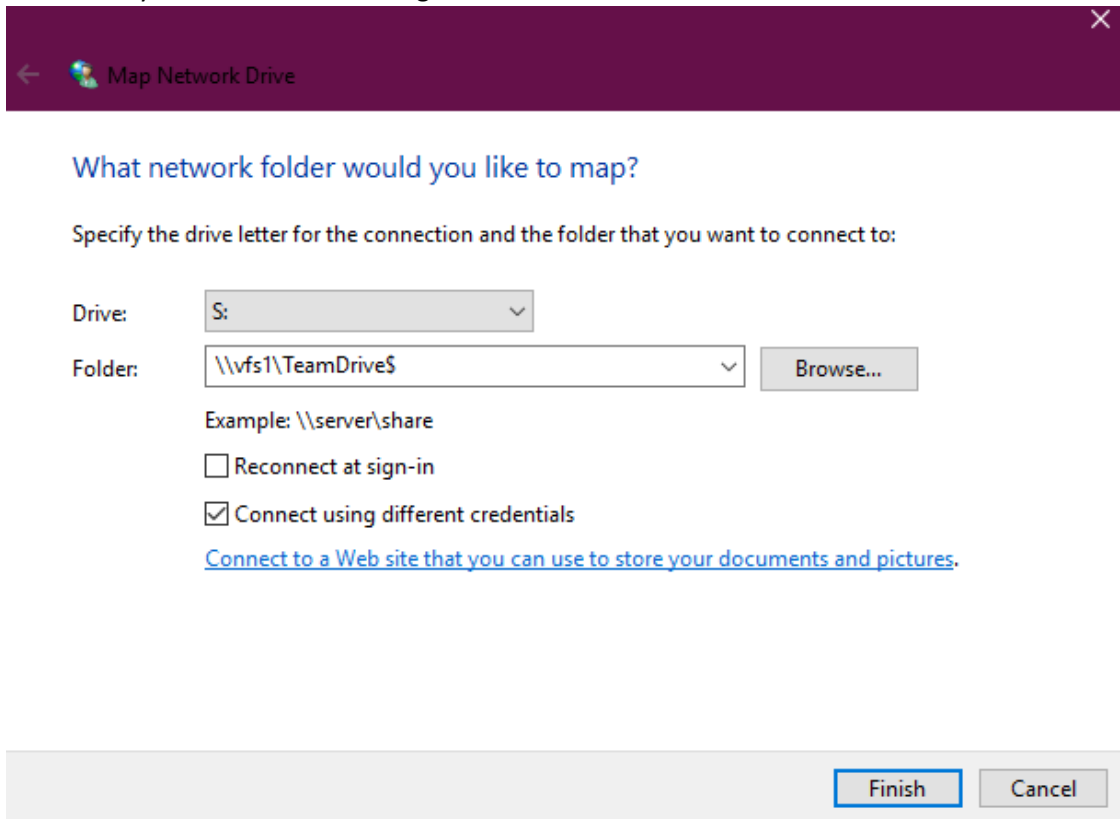
In the window that pops up click on “Map network drive”



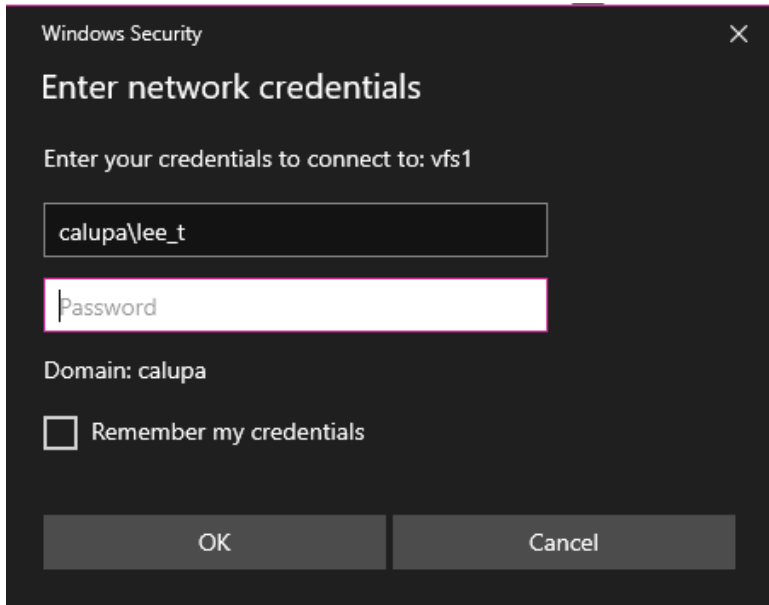
In the box that pops up, pick a drive letter. Typically we use T but as I’m already using that I chose S

The address for TeamDrive is \\vfs1\TeamDrive\$

Make sure you have “connect using different credentials” checked.



Make sure when you are putting in your credentials, you put calupa\username



After you click okay the Team Drive will show up under "Network Locations" under "This PC"

